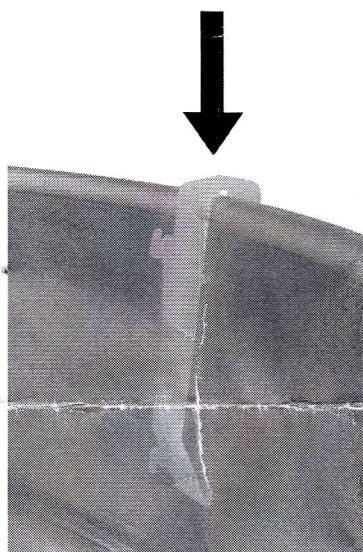




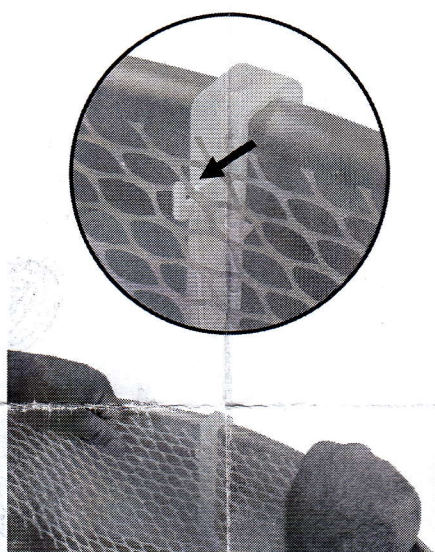
Whirlgrip Floss Stabilizer

Stabilizer Installation Instructions

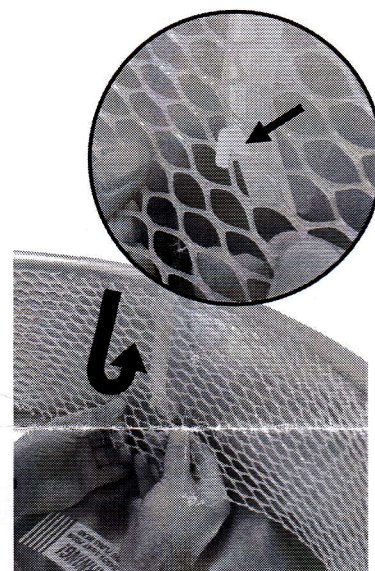
Unit must be OFF, and cool to install Floss Stabilizer. Place Floss Pan on unit and install Whirl Grip Floss Stabilizer (Item No. 3010) as shown below. Kit includes: Floss Stabilizer/screening (P/N 43032), and (6) Whirlgrip Clips (P/N 77470). Clips are designed to provide air space between screening and floss pan.



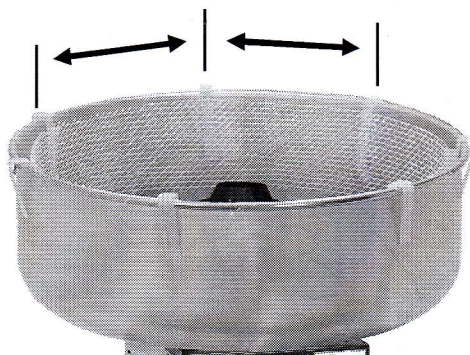
Step 1: Place Whirl Clips over rim of pan with hooks facing inside.



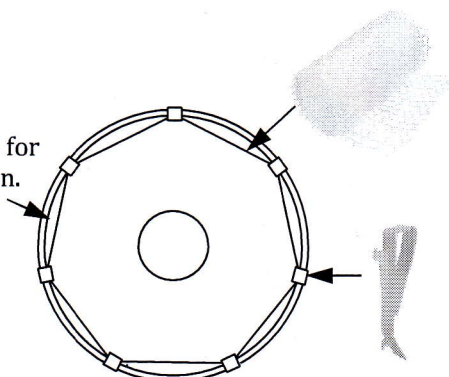
Step 2: Hang Stabilizer on top, up facing hook. Screening should be about flush with top of pan.



Step 3: Gently pull screening down and attach to bottom, down facing hook.



Allow **air space** for proper operation.



Top View of Floss Pan

Step 4: Repeat for all clips keeping equal spacing around pan (number of clips varies by model). Allow air space between pan and screening for proper operation.